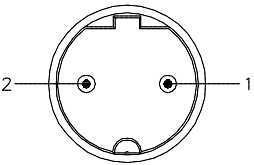

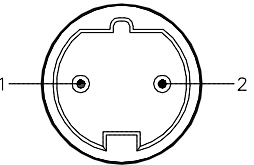

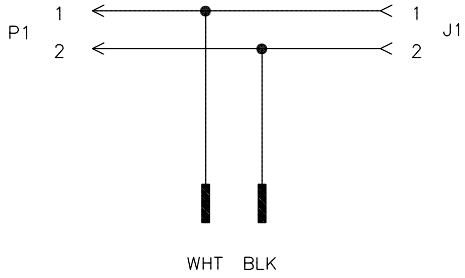
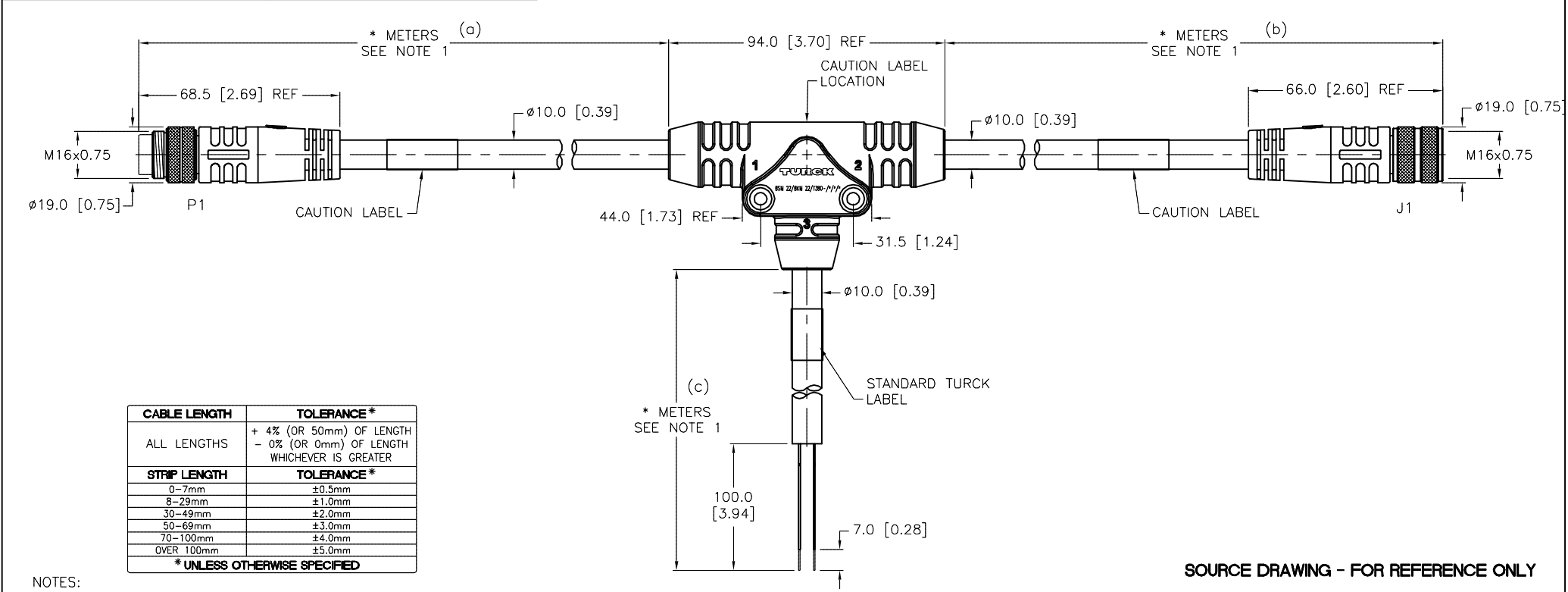


MALE END VIEW (P1)	FEMALE END VIEW (J1)	WIRING DIAGRAM	SPECIFICATIONS	
 1 = WHITE 2 = BLACK  M16 connector	 1 = WHITE 2 = BLACK  M16 connector	 WHT BLK	CONTACT CARRIER MATERIAL	TPU
			MOLDED HEAD MATERIAL/COLOR	TPU/BLACK
			CONTACT MATERIAL/PLATING	BRASS/GOLD
			COUPLING NUT MATERIAL/PLATING	BRASS/NICKEL
			RATED CURRENT [A]	18.0 A
			RATED VOLTAGE [V]	600 V
			OUTER JACKET MATERIAL/COLOR	PVC/BLACK
			CONDUCTOR INSULATION MATERIAL	PVC
			NUMBER OF CONDUCTORS [AWG]	2x12 AWG
			TEMPERATURE RANGE	-40°C TO +90°C (-40°F TO +194°F)
			PROTECTION CLASS	MEETS IEC IP67

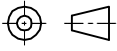


NOTES:

1. "*" INDICATES CABLE LENGTH IN METERS. CONTACT TURCK TO ORDER SPECIFIC LENGTHS.

**CAUTION:**
RISK OF ELECTRICAL SHOCK
DO NOT DISCONNECT UNDER LOAD

SOURCE DRAWING - FOR REFERENCE ONLY

RELATED DOCUMENTS					3RD ANGLE PROJECTION		THIS DRAWING IS CONFIDENTIAL AND THE PROPERTY OF TURCK INC. USE OF THIS DOCUMENT WITHOUT WRITTEN PERMISSION IS PROHIBITED.		3000 CAMPUS DRIVE MINNEAPOLIS, MN 55441 1-800-544-7769 (763) 553-7300 (763) 553-0708 fax www.turck.us	
1. 2. 3. 4.							TURCK			
MATERIAL					DRFT RWC		DATE 05/03/10		DESCRIPTION	
SEE SPECIFICATIONS					APVD		SCALE 1=2.0		BSM 22/BKM 22/T380-*/*/* (a)(b)(c)	
FINISH					UNIT OF MEASUREMENT		IDENTIFICATION NO.		REV	
SEE SPECIFICATIONS					CONTACT TURCK FOR MORE INFORMATION		MILLIMETERS		D	
DO NOT SCALE THIS DRAWING					FILE: 777026237		SHEET 1 OF 1			